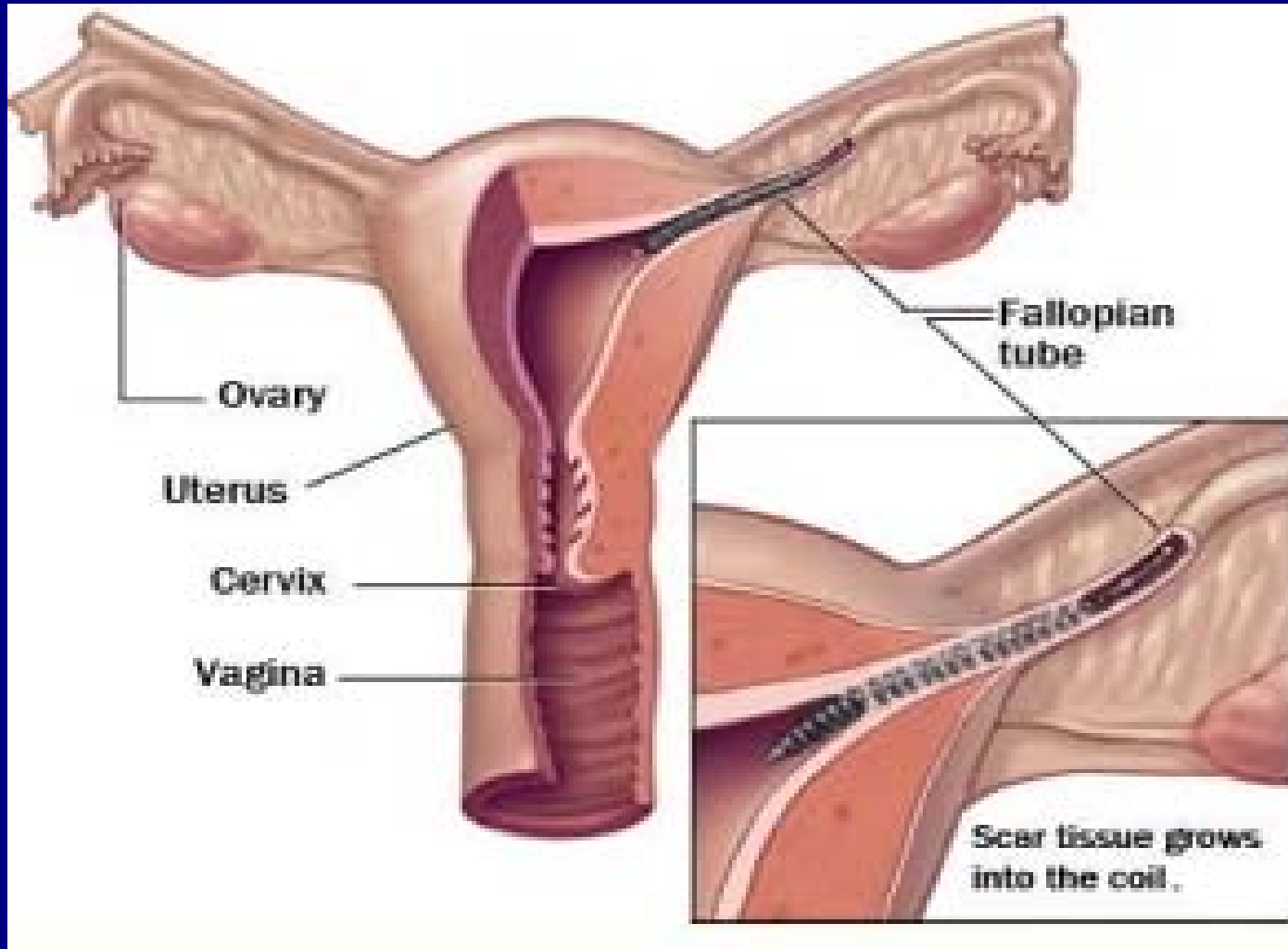
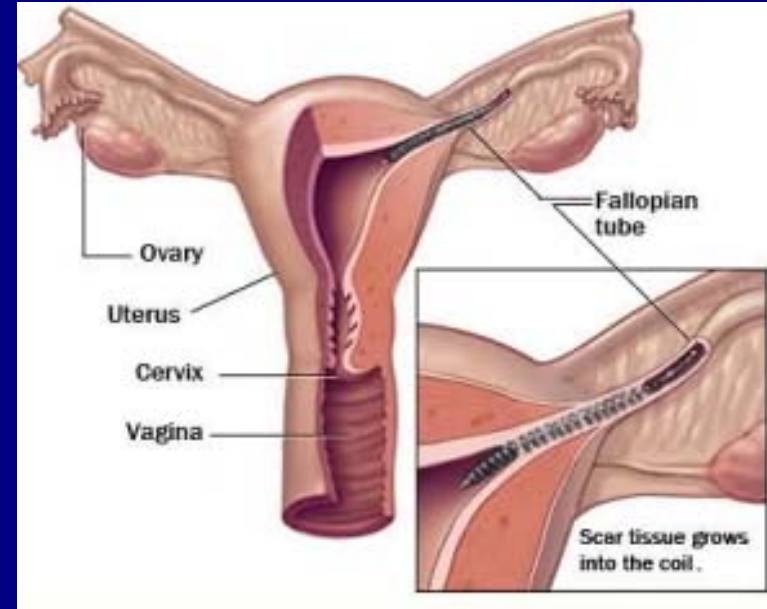


Essure[®]



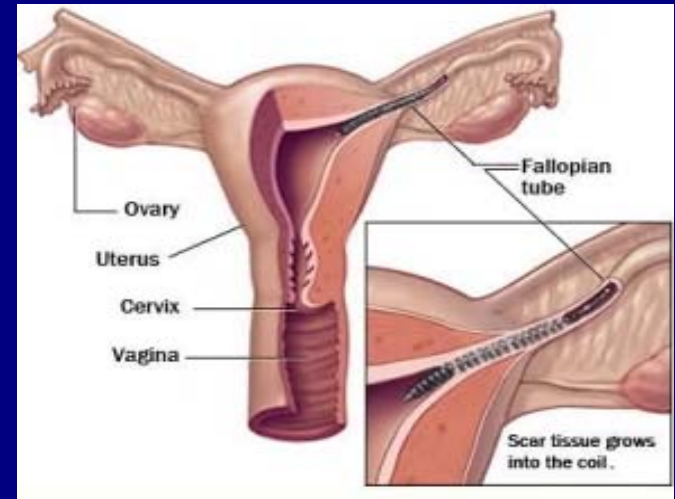
Essure[®]

- Fordele
 - Ambulant, lokal analgesi + NSAID
 - Hysteroskopisk anbringelse, laparoskopi undgås



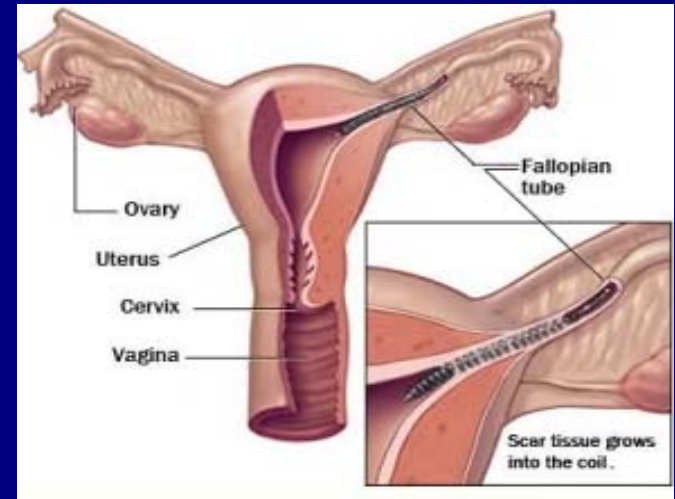
Essure[®]

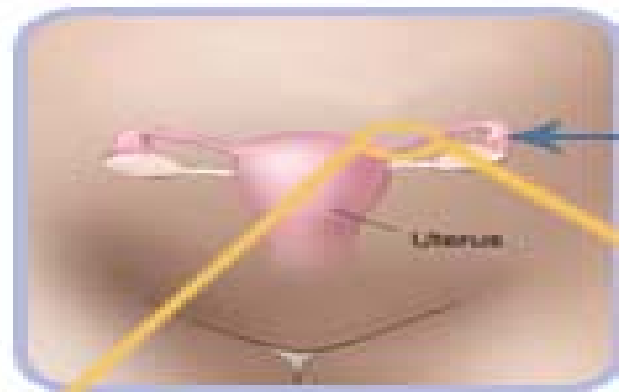
- Ulemper I
 - Smerter v. oplægn. 13%
 - Mavekramper 30%
 - Vaginalblødning 11%
 - Kvalme 7%
 - Perforation af tuba 1 - 3%
 - Fejlplacering 0,5 - 3%



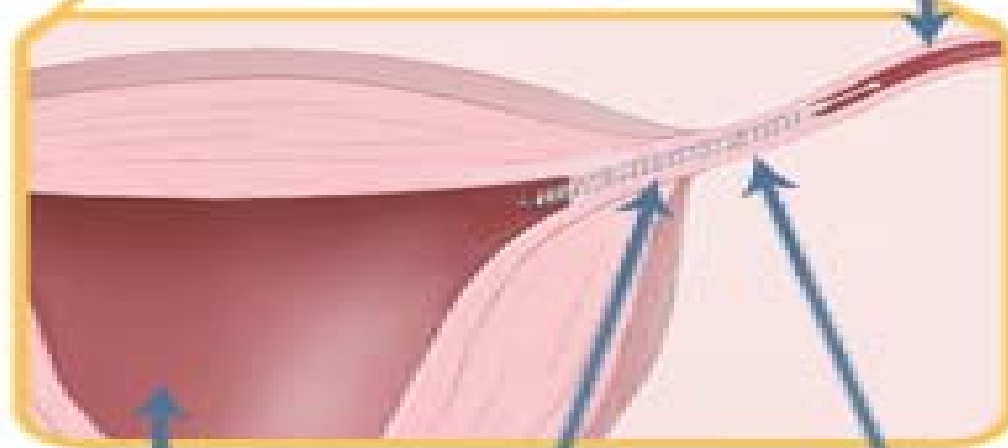
Essure[®]

- Ulemper II
 - 3 mdrs. karenstid
 - Postoperativ HSG/HSU
 - 95% succesrate
 - 96,5% effektivitet e. 3 mdr.
 - 100% irreversibel
 - IVF ?
 - TCRE ?
 - 2. gen. endometriablation ?
 - Gestagenspiral ?
 - Nikkelallergi ?





Fallopian tube



Uterus

Essure micro-insert

Body tissue grows into the Essure micro-insert blocking the Fallopian tube